

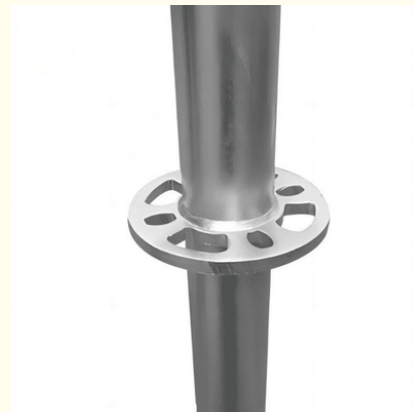
Ringlock System Scaffolding With Q235 Steel For Architecture Applications

Our Product Introduction

for more products please visit us on bythaiscaffold.com

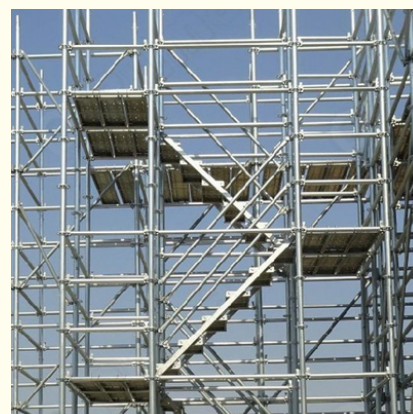
Basic Information

- Place of Origin: China
- Brand Name: Bythai
- Certification: SGS
- Model Number: BM202
- Price: 4.5-8.5
- Packaging Details: In bundles
- Delivery Time: 10-15
- Payment Terms: TT/TC



Product Specification

- Surface Treatment: Hot-dip Galvanized
- Product Name: Ringlock System
- Material: Q235 Steel
- Application Scenarios: Architecture
- Shipping Origin: China
- Warranty: 2 Years
- Highlight: **Customized Q235 Ringlock System Scaffolding, SGS Steel Ringlock System Scaffolding**



Product Description

Product Description:

Ringlock System Scaffolding

The **Ringlock System Scaffolding** is a highly versatile and durable modular scaffold system designed for use in various architecture projects. It is a product of China, known for its high-quality and cost-effective construction materials.

The system consists of a series of **Ringlock Scaffold Connectors** which are made of galvanized steel, providing strength and stability to the scaffolding structure. These connectors are designed to easily and securely connect the different components of the system, making it quick and easy to assemble and dismantle.

The main component of the system is the **steel Ringlock scaffolding**, which consists of vertical standards and horizontal ledgers that are connected by the ringlock connectors. This design allows for a higher load-bearing capacity, making it suitable for use in a wide range of applications.

The **Ringlock Rosette** is another important part of the system, which is used to connect the diagonal braces to the vertical standards. This helps to provide additional support and stability to the scaffolding structure, ensuring the safety of workers on site.

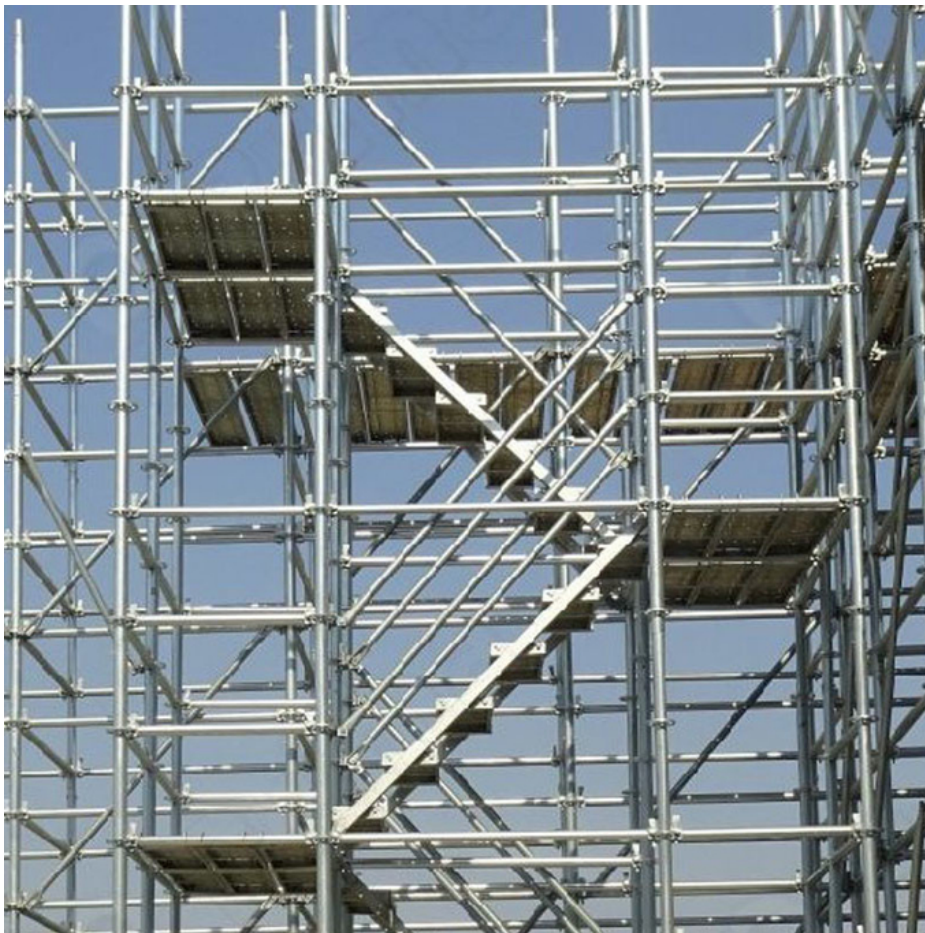
To ensure the durability and longevity of the product, all components of the **Ringlock System Scaffolding** are **hot-dip galvanized**. This surface treatment not only provides protection against corrosion and rust, but also makes it suitable for use in various weather conditions.

One of the key features of this product is its **modular scaffold system** design. This allows for easy customization and adaptation to different architecture projects, making it a practical and cost-effective choice for construction companies.

The **Ringlock System Scaffolding** comes with a **2-year warranty**, providing customers with peace of mind and assurance of its quality and durability. With its high load-bearing capacity, durability, and ease of use, this product is suitable for a wide range of **application scenarios** in architecture, including building construction, renovations, and maintenance projects.

In conclusion, the **Ringlock System Scaffolding** is a reliable, durable, and cost-effective choice for any architecture project. With its strong and stable structure, modular design, and hot-dip galvanized surface treatment, it is a must-have for any construction company looking for a high-quality scaffolding system.





Applications:

Ringlock System Scaffolding – Bythai BM202

Introduction

Bythai's Ringlock System Scaffolding is a versatile, easy-to-assemble and cost-effective scaffolding solution that is compliant with international scaffolding standards. The BM202 model is manufactured in China, with high-quality Q235 steel and a hot-dip galvanized surface treatment for durability and longevity.

Application Scenarios

Ringlock System Scaffolding is suitable for a wide range of applications in the architecture industry. It is commonly used in the construction of buildings, bridges, and other large structures. With its high load capacity and secure design, it is also ideal for use in industrial projects such as oil refineries, power plants, and shipbuilding yards.

Features

Compliant Scaffolding Standards: Bythai's Ringlock System Scaffolding meets all international scaffolding standards, ensuring safety and compliance on worksites.

Cost-Effective Ring Lock System: The BM202 model offers a cost-effective solution for scaffolding needs, with its durable and long-lasting materials.

Versatile: The Ringlock System can be easily adapted to different types of construction projects, making it a versatile choice for any worksite.

Easy Assembly: The BM202 model is designed for easy and quick assembly, saving time and labor costs on construction sites.

High Load Capacity: With its sturdy Q235 steel construction, the Ringlock System Scaffolding can support heavy loads, making it ideal for large-scale construction projects.

Safe and Secure: The design of the Ringlock System Scaffolding includes multiple locking points, ensuring stability and safety for workers at any height.

Durable: The hot-dip galvanized surface treatment provides a protective layer against rust and corrosion, making the scaffolding system durable and long-lasting.

Efficient Installations: The Ringlock System Scaffolding requires minimal tools and equipment for installation, making it a time-saving and efficient choice for construction projects.

Flexible and Customizable: The modular design of the Ringlock System allows for flexibility and customization to fit any project's specific needs.

Reliable: With its strong and sturdy construction, the Ringlock System Scaffolding offers a reliable and secure scaffolding solution for any worksite.

Time-Saving and Convenient: The easy assembly and flexible design of the Ringlock System Scaffolding make it a convenient and time-saving choice for construction projects.

Packaging and Delivery

All Bythai's Ringlock System Scaffolding products are packaged in bundles and delivered within 10-15 days after order confirmation. We offer flexible payment terms such as TT and TC for our customers' convenience.

Warranty

All Bythai's Ringlock System Scaffolding products come with a 2-year warranty, providing our customers with peace of mind and confidence in our product's quality.

Overall, Bythai's Ringlock System Scaffolding offers a safe, reliable, and cost-effective scaffolding solution for various construction projects. Its compliance with international standards, high load capacity, and customizable design make it a popular choice among architects, builders, and contractors.



Customization:

Customization Service for Bythai BM202 Ringlock System Scaffolding

Brand Name: Bythai

Model Number: BM202

Place of Origin: China

Certification: SGS

Price: 4.5-8.5

Packaging Details: In bundles

Delivery Time: 10-15

Payment Terms: TT/TC

Product Name: Ringlock System

Application Scenarios: Architecture

Warranty: 2 Years

Shipping Origin: China

Surface Treatment: Hot-dip Galvanized

Our Ringlock System scaffolding, model BM202, is a highly customizable and advanced scaffolding solution designed by Bythai. We offer a range of customization options to meet the specific needs of our customers.

Our Ringlock System scaffolding is manufactured in compliance with international scaffolding standards, ensuring the highest level of safety and quality. The secure scaffolding joints of our system provide a stable and sturdy structure for your construction needs.

The easy assembly of our Ringlock System scaffolding allows for quick and efficient installation, saving you time and labor costs.

Additionally, our scaffolding has a high load capacity, making it suitable for a wide range of construction projects.

We understand the importance of durability and longevity in scaffolding, which is why we offer a 2-year warranty on our Ringlock System scaffolding. Our scaffolding is shipped from our manufacturing facility in China and undergoes a hot-dip galvanization process for added protection against corrosion.

With our customization service, we can tailor our Ringlock System scaffolding to meet your specific requirements. Contact us today to learn more about our customization options and how we can assist with your architecture projects.

Packing and Shipping:

Packaging & Shipping

Ringlock System Scaffolding is carefully packaged and shipped to ensure safe delivery and easy handling for our customers.

Packaging

Our Ringlock System Scaffolding comes in sturdy wooden crates to protect the components during transportation. Each crate is labeled with the product name, size, and quantity for easy identification.

Shipping

We offer flexible shipping options to meet the needs of our customers, including air, sea, and land transportation. Our team works closely with reputable shipping companies to ensure timely and efficient delivery of our products.

For international shipments, we provide all the necessary documentation and support to ensure smooth customs clearance. We also offer insurance options for added protection during transit.

Upon arrival, our customers can expect to receive their Ringlock System Scaffolding in perfect condition, ready to be assembled and used on their construction projects.

We take great care in packaging and shipping our products to guarantee customer satisfaction and the safe arrival of our high-quality scaffolding.



Bythai Scaffolding Co.,Ltd



17300780862



info@bythaiscaffolding.com



bythaiscaffold.com

No. 605,Industrail Exchange Center ,Huanghua Town Changsha Hunan China