

Corrosion-Resistant Q195 Tubular Steel Frame Scaffolding Lightweight and Easy Assembly

Our Product Introduction

for more products please visit us on bythaiscaffold.com

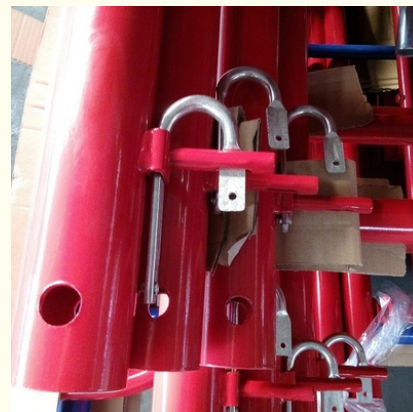
Basic Information

- Place of Origin: China
- Brand Name: Bythai
- Certification: SGS
- Model Number: BT04
- Minimum Order Quantity: 1000pcs
- Price: 18.9-28.9
- Packaging Details: Bundle
- Delivery Time: 15-30 Working Days
- Payment Terms: L/C, T/T
- Supply Ability: 5000t/Month



Product Specification

- Features: Easy To Assemble And Disassemble
- Stability: High
- Surface Treatment: Powder Coating
- Safety: High
- Durability: Long-lasting And Sturdy
- Weight: Lightweight
- Load Capacity: 1000kg
- Material: Steel
- Size: Various Sizes Available
- Component: Frame, Joint Pin, Base Plate, Screw Jack, Etc.
- Easy Installation: Yes
- Usage: Indoor/Outdoor



Product Description

Product Description:

Made from corrosion-resistant Q195 steel, this tubular frame scaffolding is perfect for construction projects in harsh weather conditions. As an OEM product, it can be customized to meet specific requirements. Its lightweight design makes for easy transportation and assembly while ensuring durability over time. Ideal for contractors and construction managers looking for reliable, long-lasting scaffolding solutions at factory prices.

Features:

Product Name: Frame System Scaffolding

Surface Treatment: Powder Coating

Reusability: Yes

Safety: High

Flexibility: High

Color: Steel, Painted Color

Ladder Frame: Yes, for Frame System Structuring

Technical Parameters:

name	Size(W*H)	Materials	surface
Walk Through Frame	4*5'7"(1219*1700mm)	Q195 /Q235/Q355B	Powder Coated
	5*6'4"(1524*1930mm)		
	5*4'(1524*1219mm)		
	5*6'4"(1524*1930mm)		
	5*6'7"(1524*2007mm)		











Applications:

Bythai BT04 Frame System Scaffolding

Bythai BT04 Frame System Scaffolding is a perfect combination of h frame and ladder frame structures that offer an efficient and cost-effective solution for construction projects. It features a high load-bearing capacity, high durability, excellent safety, and reusability. In addition, it is highly cost-effective, making it the perfect choice for applications such as scaffolding, formworks, and temporary structures. These features make Bythai BT04 Frame System Scaffolding the ideal choice for any construction project, as it ensures that the job is done efficiently, safely, and with minimal cost. The high load capacity, durability, and safety of the frame system make it ideal for any kind of scaffolding, formwork, or temporary structure, while the reusability ensures that the product can be used for multiple projects. Bythai BT04 Frame System Scaffolding is the ideal choice for any construction project due to its high load capacity, durability, safety, reusability, and cost-effectiveness. With this product, you can be sure that your construction project will be completed efficiently, safely, and cost-effectively.

Customization:

Bythai BT04 Scaffold Mobile Frame System

This scaffold mobile frame system is made from high-quality materials, offering you superior durability and stability. It is lightweight, making it easy to move and transport. It is also cost-effective and can be customized to fit your needs. The Bythai BT04 Scaffold System is an excellent walk-through scaffold system that provides maximum safety and efficiency.

Support and Services:

We provide technical support and services for Frame System Scaffolding. Our technical support team has a range of experts who are available to answer any questions you may have about the product. We also provide ongoing maintenance and monitoring services to ensure the system is running optimally. Our team is trained in the latest technologies and can provide custom solutions to any issues you may have. We strive to provide the best customer service and support to our customers so that they can have the best experience with our product.



Bythai Scaffolding Co.,Ltd



17300780862



info@bythaiscaffolding.com



bythaiscaffold.com

